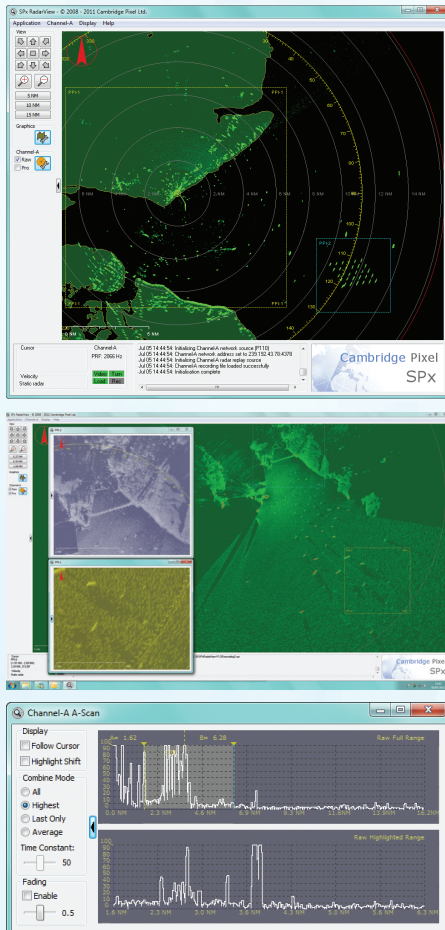


RadarView

Primary Radar Visualisation



Features:

- Windows-based radar visualization
- High-performance primary radar display
- Radar input from HPx card or network
- Multiple (up to 5) independent PPI windows
- Independent view, colour and scale
- Multiple input channels
- Static radar or moving platform applications
- Underlay map display
- Overlay symbology
- AIS track display
- Primary track display (from SPx Server)
- Built-in radar processing
- Multiple radars in a window
- Easy-to-use Windows-based software
- Runs on wide range of hardware
- Optional TV camera display
- B-Scan (Azimuth-Range) display
- A-Scan (Oscilloscope) Display
- Record and Replay of video (Option)
- Built-in test pattern generator
- Ideal for radar maintenance and configuration

RadarView is Cambridge Pixel's Windows-based software application for the capture and visualization of primary radar video.

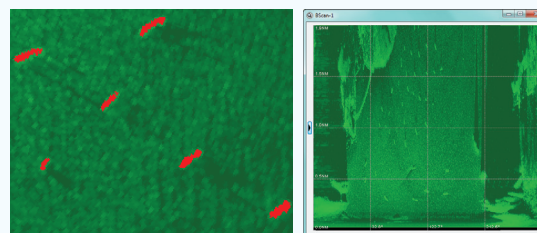
With radar video received from a remote server (SPx Server), a direct network interface from the radar, or a HPx radar capture card, RadarView provides a ready-to-run display application. It supports multiple channels, multiple radar windows and multiple display presentations for primary radar video. Zooming and panning the picture is as easy as dragging the mouse, with the radar picture being updated in real-time to give a highly interactive display.

RadarView supports the display of radar video in normal PPI view, and for more specialized requirements supports B-Scan and A-Scan views. A-Scan mode is especially useful for radar configuration and set-up.

RadarView Scan Conversion

RadarView uses Cambridge Pixel's high-performance Radar Scan Converter software to present multiple videos in a window, and multiple windows on the screen.

The view can be scrolled and zoomed effortlessly, and in real-time, using the mouse to move the radar centre and the scroll wheel to zoom. Different videos can be shown in different colours in the same window – for example original and processed video.



Multiple Scan Conversions

You can configure RadarView for one main PPI and four additional windows, so five windows in total. Each window can contain one or

two channels of radar video, where a channel can come from a HPx-100 card, a network source or a recording. Finally, each channel can be displayed in raw and processed form, where the processed form is derived using RadarView built-in processing capabilities. So in total, and hardware performance permitting, you could have $5 \times 2 \times 2 = 20$ simultaneous scan conversions.

Intuitive Display Navigation

Click the mouse in one of RadarView's windows and simply drag the pointer to move the view position. The radar picture is updated in real-time as the mouse moves. To zoom in or out simply use the mouse's scroll wheel. The view in each PPI window can optionally be displayed as a graphic box on the main PPI.

Display Presentation

The colour of each video can be independently configured and videos can be displayed with or without history fade trails, which are retained as the view changes. Up to 255 scans of history data can be displayed and new data can be displayed in a different colour to history data for clear distinction.

Radar Acquisition

RadarView works with Cambridge Pixel's HPx Radar Interface cards. These cards are compatible with a wide range of commercial and military radars using video, trigger and ACP/ARP or parallel azimuth signals. An optional syncho-to-parallel converter card (PCI only) is available. Please see Cambridge Pixel's separate data sheet for the HPx cards for full details of the supported radar signals. ■

Radar Input Options

Using HPx family radar input cards: Dual analogue video or up to 8 bits digital video with clock, trigger, ACP/ARP + parallel azimuth.
Up to 2 HPx cards can be controlled from one RadarView. Refer to HPx datasheet for full specifications of radar interface signals.

SPx Server: SPx Server is a separately licensed product that provides networked video and tracks. RadarView can receive video and tracks from one or more SPx Servers.

Software Licensing

USB Dongle supplied. MAC address license as option.
For other licensing options, including OEM, please consult Cambridge Pixel.

Host Computer

2GHz or higher CPU speed recommended
2GB or more of system RAM
ATI or nVidia graphics hardware
Windows XP/Vista/7

RadarView Radar Display

Up to 5 PPI scan conversion windows each with independent view and range scale.
Up to 2 channels of radar video per window.
Programmable colour for all channels
Programmable persistence
Retained trails on view change
Raw and processed radar per channel
B-Scan video (Option)
A-Scan views

Display

Resolution up to 2048 x 1200 per head.
Multi head displays supported with radar across heads.

Record and Replay (Option)

Radar video may be recorded to a local hard drive whilst still displaying. Video may subsequently be replayed.

Graphics

Underlay raster map loaded from file.
Built-in world vector shoreline map
AIS target display
Compass rose
Range-scale marker

Processing Modules

Clutter processing
Thresholding
Area-based video selection using complex polygons
FTC

TV Video Windows

Up to 2 TV video windows (one window per grabber card). Requires Direct Show PCI Capture card.

Moving Platform

Serial input for NMEA navigation data
North or heading referenced display

Ordering Information

Product Code	110-560	110-563	110-562
RadarView standard features	●	●	●
RadarView with Record and Replay option		●	●
RadarView and Record and Replay and B-Scan display option			●

To interface with radar signals, order the HP-200 radar interface card (part number 161-100), which is provided with Windows drivers. Optional radar interfacing cables are available. Alternatively, network video may be served from SPx Server into multiple RadarView clients. Consult Cambridge Pixel for details of SPx Server.

To interface to CCTV signals, a compatible DirectShow PCI video capture card is available from Cambridge Pixel or a third party.

For more information, please contact:



Cambridge Pixel Ltd
New Cambridge House
Litlington Royston
Herts SG8 0SS

+44 (0) 1763 852749
enquiries@cambridgepixel.com
www.cambridgepixel.com